

# cue

PRODUCT OVERVIEW



JANUARY 2012

# HOME & RESIDENTIAL APPLICATIONS

## OVERVIEW

Just imagine driving your car and approaching your house. Using the remote control inside the car you open the drive gate. Simultaneously, lights go on in the garage and entrance hall.

You enter the hall and disarm the security system with your personal code. As you do so, the code automatically switches on your preferred TV channel or puts on your favourite CD. The house automatically switches over into the WE ARE AT HOME mode which includes setting the temperature, window blinds, lights etc.

You sit down in the living room, fully capable of running your home cinema by means of a single touch screen. Gone are the days of endless, confusing remote controls. A corresponding button on the touch panel helps you choose your favourite programme. When the show is over you switch off the equipment in the same, simple way.

No longer do you have to walk to the switch on the wall to turn on the lights in your kitchen or swimming pool. After entering the kitchen or reaching your swimming pool you choose your music by pressing a single control button at the entrance door. The volume has already been pre-set automatically to your personal level.

Upon retiring to bed a single touch on a button sets the house into NIGHT mode. Your audio-visual system is turned off automatically; all lights and sockets are switched off (thus removing the risk of leaving that old iron

plugged in!). Heating is turned on to the desired night temperature. The corridor leading to your bedroom lights up automatically. You tuck yourself into bed, secure in the feeling that your whole house is safe, protected by CUE control system.

When you wake up in the morning a single button switches on the whole house into DAY mode. Another option is to have the DAY mode turned on automatically at a given hour, for example at 7 a.m. Everything is activated – curtains are drawn, your favourite music starts playing, etc.

It's time to leave home. Again, by pressing a single button you can switch on the WE ARE GONE mode. However, for passers-by your house can still appear occupied – thanks to the Presence Simulation system which turns on lights, moves window blinds or switches on the TV, thus creating the impression of life within the house. The simulation can be simple, based on specific types of action carried out at specific times or "Intelligent" – i.e. where the control system pre-records the real behaviour of given residents so as to re-create their particular habits during their absence.

Naturally, CUE also comprises a security system which, in case of violation, immediately sends a signal to the central security panel as well as an SMS text message or e-mail to you.

Even when absent from home, you can still monitor and control your house remotely. For instance, you can check the temperature and change its set-up, turn on your sauna before arriving home, start recording a TV programme you do not want to miss, etc. This is all possible via internet or SMS text messages.

## REMOTE ACCESS TO ALL HOME SYSTEMS

You can access your home remotely via Internet, e-mail or SMS text messages. Your home web site will enable you to monitor the current state of your house including interior and exterior temperatures, turning on the heating, recording your favourite TV programme or watering the lawn.

## WINDOW DRAPES, BLACKOUTS AND WINDOW TREATMENTS

The control system can automatically manipulate window blinds according to the intensity of sunlight. This helps to regulate illumination and temperature in the room. In summer it can reduce the cost of air-conditioning in rooms subject to direct sunlight. In case of strong wind the system ensures that window blinds and awnings are retracted, protecting them from damage.

## AUTOMATED ENTRYWAYS AND GATES CONTROL

The connection of gates, doors and windows to the control system facilitates the automated unlocking of doors when you come home as well as automated locking when you leave. Should you forget to close any windows, the system will remind you.

## SECURITY AND MONITORING CAMERA SURVEILLANCE

Thanks to the switch panels of the control system you can also control the intruder security systems. This means you do not need a separate keyboard for the security subsystem – all you need are the switch panels of the control system. The system can thus turn on the Presence Simulation when you leave and arm, or send you a message in case of any alarm. In addition, thanks to the touch panel of the control system, you can monitor anything picked up by the security cameras mounted in your house. In this way, for instance, you can keep an eye on your children playing around the swimming pool.

## PERSONALIZED SEQUENCE OF ACTIONS

The control system can automatically carry out pre-set actions as required by the user. For example, after you come home and disarm the security system, the control system can turn on the lights and heating and switch on background music. TV news comes on at precisely the right time. The system can also record your regular activities during the day and use this data to simulate your presence in the house during your absence, thus discouraging uninvited visitors.

## MULTIZONE AUDIO & VIDEO CONTROL

With the help of the touch panel or keyboards you can play your favourite music or turn on your chosen TV or radio programme, setting the volume to the desired level. The control system can automate these procedures for you. For example, it can turn on the news in the bathroom after you get up, switch on relaxing music when you come home, etc.

## LIGHTING AUTOMATION

The control system enables you to control lighting by selecting appropriate illumination levels suited for a given type of activity. If you are watching TV, for example, the system sets up all lights in the room to prevent them from disturbing the picture while maintaining adequate light levels for the room. The lighting can be changed automatically, depending on the time of the day.

## HOME THEATRE CONTROL

The control system enables you to automate and simplify the operation of home audio-visual technology, eliminating the use of multiple remote controls. Pressing a single button WATCH MOVIE on your touch panel, for example, automatically switches on the TV, DVD player and the audio system. The appropriate inputs are selected, lighting in the room is set to the desired light mood and if it is sunny outside, the curtains are drawn.

## HEATING, VENTILATION AND AIR-CONDITION CONTROL (HVAC)

The control of heating and air-conditioning maintains thermal comfort while at the same time reducing energy consumption and therefore, costs. It is possible to programme suitable temperature modes for various days of the week or various times of the day, and also to establish an economy mode during your vacation. Heating and air-conditioning can be controlled for each room independently.



# BUSINESS & PROFESSIONAL APPLICATIONS

## OVERVIEW

The CUE control system facilitates simple and effective automated controlling of all modern technologies used in contemporary company buildings.

By integrating the control of all technologies into one well-arranged user interface, the CUE system enables all employees to use the equipment safely and without fear of making a mistake. Besides, using the CUE control system reduces the number of employees needed for maintenance and operation, thus lowering expenses.

Further cost reduction results from energy saving, as CUE offers effective and cost-saving control of heating, air-conditioning, lighting and other technologies heavy on energy. The system can also announce failure or maintenance requirements automatically via e-mail or SMS. By introducing all these features, CUE keeps up with the latest trends in building control systems, increasing the prestige of companies which use it.

## MEETING ROOMS & CONFERENCE SPACES

The CUE system offers the following benefits for meeting & conference rooms

- trouble-free running of presentations, automated one-touch control (for example, by pressing a button labelled PRESENTATION the whole room is set up into presentation mode – the projector is turned on, the projection screen rolls out, AV inputs are switched over to the presentation computer, appropriate light conditions are established, etc.)
- nobody is put under stress of using complex technologies – the system offers intuitive controlling with a minimum of control features
- with the CUE system, the operator can control the entire technical equipment in the room (audio-visual technology, projectors, monitors, DVD players, lighting, heating, air-conditioning, window blinds, etc.) on one panel
- lighting can be controlled by pre-set light scenes which set all lighting devices to the desired light mood, simply by pressing a single button
- remote control of rooms – if the operator has any problems with running the device, he or she can call the technical centre, which can set things remotely
- remote and automated diagnosing, allowing for timely action in servicing (for example, the CUE system sends an e-mail to the service centre indicating that a lamp in the projector needs to be replaced or a filter has to be cleaned, or sends a warning that a device is not working properly)

## TRAINING ROOMS AND CLASSROOMS

In classrooms or training rooms the CUE control system makes it possible to

- simplify the operation of audio-visual equipment, lighting or HVAC
- carry out central supervision of all rooms in the building and administer technology in all rooms centrally (e.g. central switching off of electrical equipment at night including rooms where teachers may have forgotten to turn off some of the facilities)

## MUSEUMS

The CUE control system facilitates automated control of AV shows in museum expositions both by museum staff and visitors.

## LECTURE HALLS

In large lecture halls, the CUE control system makes it possible to

- simplify the operation of all complex AV technologies currently in use, such as switching microphones, controlling sound systems, operating matrix switchers, video cameras and signal sources as well as running light effects – all this from one ergonomically designed touch panel
- distribute AV technology into several zones at venues where the lecture hall can be divided into more rooms by means of movable walls
- manage the distribution of audio-visual signals between several lecture halls

## GOVERNMENT AND JUSTICE

The CUE system provides one-touch equipment to control AV technology such as audio and video conference facilities, voting equipment or recording devices in conference and court rooms. It dramatically reduces the number of technical staff needed for the controlling of those devices.

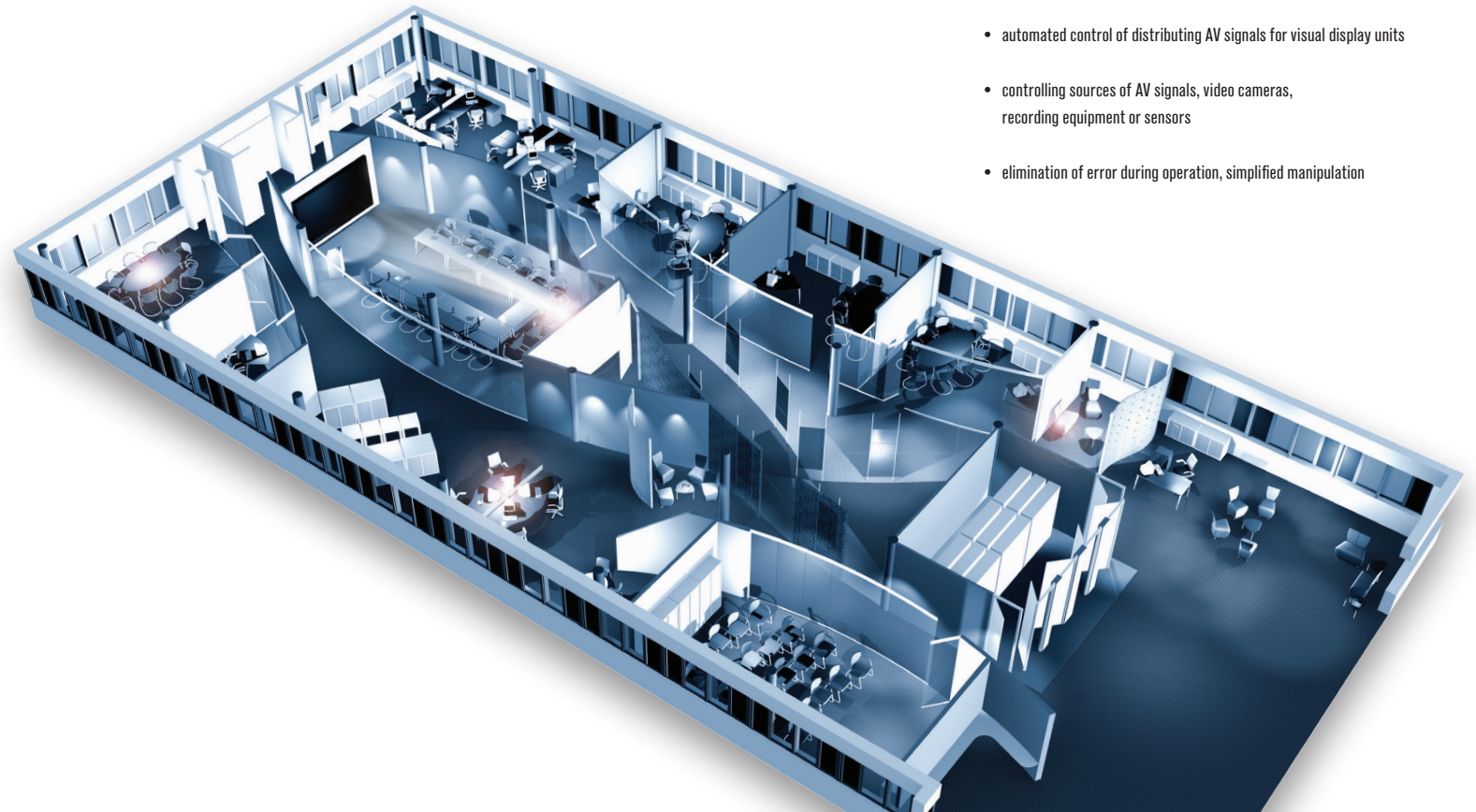
## HOTELS

In hotel spaces, the CUE control system offers automated control of audio-visual equipment, lighting, heating, air-conditioning and other kinds of modern technology in meeting and conference rooms.

## NETWORK OPERATION CENTRES (NOC)

The CUE system offers

- automated operation of multi-screen systems
- automated control of distributing AV signals for visual display units
- controlling sources of AV signals, video cameras, recording equipment or sensors
- elimination of error during operation, simplified manipulation



## Cue Visual Composer



Cue Visual Composer (CVC) is a new generation All-In-One software for control application programming. CVC is innovative mainly due to its unique concept. Touch panels and controllers are programmed in the same way, which makes it possible to use touch panels as fully functional control units. One universal programming language XPL2 allows to program graphical objects, touch panel layouts, device drivers and other parts of control application. Effective programming is achieved by visual programming approach with drag and drop, advanced editing technique IntelliSense, export and import of ready to use pieces of program and more. Application language localization and Unicode character support are inherent parts of CVC, so it does not require any programming effort. Any part of source code can be protected by a password to protect the author's intellectual property and also can be licensed to a specific hardware. Control application runs on CUE touch panels, controllers and on Microsoft Windows based computers. Graphic objects are programmed at the level of standard XPL2 language which includes graphical API (Application Programming Interface).

When designing the touch panel graphic layout, application programmers therefore do not depend on a fixed set of objects delivered by the software manufacturer but are free to create their own, often very sophisticated objects or whole functional blocks.

Runtime's Resize-On-Demand technology for graphic resources dramatically simplifies creating of graphical objects. It is not necessary to prepare special graphics for different objects sizes.

Cue Symbol Font includes more than one hundred and thirty symbols covering the needs of most control applications. The symbol set is grouped into Transport, Arrows & Movements, AV / TV Control, Indicators etc.

Runtime's High Color Enhancer improves the subjective perception of color depth. On touch panels with 16-bit color depth the application graphics looks as if it had 24-bit color depth. CVC and all runtimes for Microsoft Windows based computers can utilize multi-core processors.

CVC offers many various ways how to debug and test applications, which significantly shortens

the development cycle. The whole project can be simulated anytime on a computer or tested on real hardware units using their control panels. For every unit in the project this debug mode can be set individually and both simulation and real unit testing can be combined. CVC displays debug messages from simulated units and from real units too. Firmware update On-The-Fly is implemented for all CUE touch panels and controllers. All firmware is part of CVC installation. If CVC recognizes an older firmware version, it automatically updates it before debugging or final project uploading. Cue Visual Composer thus becomes an open platform for a large group of application programmers and makes an important contribution to the development of modern graphical user interfaces. The XPL2 programming language itself is tailored to the needs of control systems used to integrate various technologies. It includes a complete set of powerful commands that enable system integrators to achieve an effective, robust and easily maintainable code.

Product code PT0007

### Preprogrammed Building Blocks

Preprogrammed Building Blocks dramatically increase productivity in the preparation of control applications using Cue Visual Composer. Currently we offer following types: Graphic Collections, Device Drivers, Applets, Widgets.

**Graphic Collection** is a set of ready to use graphic objects which allows to prepare touch panel graphical interface.

**Device Driver** is a part of XPL2 code which communicates with controlled device.

**Applet** is a part of program that performs specific task and it runs within the context of a larger program. For example Sunrise/Sunset Timer, Simple Scheduler.

**Widget** is a small full functional application that can be inserted into Cue Visual Composer project.

For more details and actual offer please see CUE web site.

## pcCUE-standard



This software enables to use any Windows PC or Tablet as a Cue System control panel. It is a suitable addition to CUE control panels. The GUI application has to be designed using standard programming tool – Cue Visual Composer. The wired or wireless communication between the control panel device and the control system is based on Ethernet or Wi-Fi standard.

- Compatible with Microsoft® Windows XP/Vista/7 (32/64-bit)
- Application designed with Cue Visual Composer
- Full screen mode available
- Application upload directly from Cue Visual Composer or using configuration window
- Ethernet wired or wireless communication between the panel and the control system
- Communication with Cue System units using CUEnet protocol

Product code CS0405

## pcCUE-professional



This software enables to use any Windows PC or Tablet as a Cue System control panel and controller. It is a suitable addition to CUE control panels and controllers or it can be used as a standalone application. It has the same functionality as pcCUE-standard plus any IP operated device can be controlled directly without a need of control unit, because complete set of XPL2 IP commands can be used. The GUI and control application has to be designed using standard programming tool – Cue Visual Composer. The wired or wireless communication between the control panel device, control system and controlled devices is based on Ethernet or Wi-Fi standard.

- Compatible with Microsoft® Windows XP/Vista/7 (32/64-bit)
- Application designed with Cue Visual Composer
- Full screen mode available
- Application upload directly from Cue Visual Composer or using configuration window
- Ethernet wired or wireless communication between the panel, control system and controlled devices
- Communication with Cue System units using CUEnet protocol
- Full set of XPL2 IP commands available for direct device control

Product code CS0406

## aCUE-standard



This software enables to use any Android tablet or phone as a Cue System control panel. It is a suitable addition to CUE control panels. The GUI application has to be designed using standard programming tool – Cue Visual Composer. The wireless communication between the control panel device and the control system is based on Wi-Fi standard.

- Compatible with Android 2.3 or higher
- Application designed with Cue Visual Composer
- Application upload directly from Cue Visual Composer
- Ethernet wireless communication between the panel and the control system
- Communication with Cue System units using CUEnet protocol

Product code CS0426

## aCUE-professional



This software enables to use any Android tablet or phone as a Cue System control panel and controller. It is a suitable addition to CUE control panels and controllers or it can be used as a standalone application. It has the same functionality as aCUE-standard plus any IP operated device can be controlled directly without a need of control unit, because complete set of XPL2 IP commands can be used. The GUI and control application has to be designed using standard programming tool – Cue Visual Composer. The wireless communication between the control panel device, control system and controlled devices is based on Wi-Fi standard.

- Compatible with Android 2.3 or higher
- Application designed with Cue Visual Composer
- Application upload directly from Cue Visual Composer
- Ethernet wireless communication between the panel, control system and controlled devices
- Communication with Cue System units using CUEnet protocol
- Full set of XPL2 IP commands available for direct device control

Product code CS0427

## Cue Reservation System



Cue Reservation System (CRS) is a new application that expands the range of user functions offered by the Cue System. It is software solution allowing plan, schedule and manage conference rooms, lecture rooms and other spaces using CUE touch panels. Microsoft Exchange Server® 2007/2010 is used for planning. In this software, every room has its own account, and its calendar is used to plan the occupation and use of rooms. Cue units communicate with the server through application Cue Exchange Connector.

Thus it is now possible to use CUE touch panels not only for the controlling of AV technology, lighting or heating, but also for the reserving of rooms, viewing their booking schedules or showing events that are currently taking place there.

The main function of the Cue Reservation System is a representation of the currently running event in a room (name of event and the period of time it runs for) as well as a representation of the nearest events to come. By touching the representation of the event on the screen, the user can view details of the event (the organiser, the importance, public or private character of the event, etc.). It is also possible to browse through a list of events taking place in the following days as well as those that took place in the previous days.

It is presumed that touch panels of the reservation system will be placed in two locations: at the entrance to the room and inside the room.

Panels placed in front of the entrance serve mainly for informing about events taking place in the room. Useful functions of the touch panel include the possibility of booking the room or viewing a list of empty rooms available at the moment.

Panels inside the room are used mainly for controlling all the technology, the reservation system being one of the controlling pages in these panels. There are other functions of the reservation system that are suitable for these panels, for example the ending of the current event (and thus making the room available) or the prolonging of the event. The operator can take advantage of these functions if a planned event ends earlier or if it is necessary to prolong the time planned for the event.

Cue Reservation System also makes it possible to connect an external monitor (placed for instance

at the reception) and view the list of all events in all rooms. It is of course possible (independent of Cue Reservation System) to plan room schedules through standard client applications for the Exchange Server, i.e. using the Microsoft Outlook® program.

CUE Reservation System thus enables clients to plan and administer room management in a comfortable, efficient and last but not least, attractive way.

- Dedicated calendar for each room
- Room reservation using standard appointments
- Events for every room can be displayed on the touch panel
- Complete room plan can be displayed on the central display device
- From a touch panel it is possible to view room schedule, finish or prolong current appointment, book a room, etc.

### Order information

Cue Reservation System (CRS) consists of two parts. One CRS Core Set is necessary for every application and number of CRS Single Room Licenses depends on number of rooms. Room touch panels have to be ordered separately. Microsoft Exchange Server® is not part of delivery.

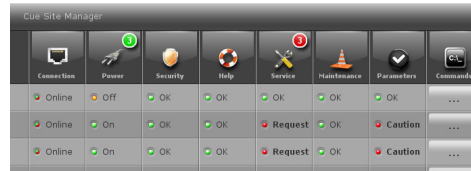
### CRS Core Set

- ipCUE-omega with preinstalled Cue Exchange Connector for Microsoft Exchange Server®
- Documentation CD
- Product code CS0407

### CRS Single Room License

- Product code CS0408

## Cue Site Manager



Cue Site Manager (CSM) is a software solution for IT staff and asset management allowing to remotely monitor and control boardrooms, offices, auditoriums, classrooms, private homes, flats, etc. and their associated controlled devices. Each site can be identified by name, group and location.

### Monitor

The system monitors any system attribute - lights, room temperature, volume, projector lamp life and power, etc. For each attribute the threshold value and condition can be defined and if this condition is reached one of the following actions will be triggered.

- Help request informs administrator that someone on site needs a help. Typically this action can be triggered using Help button on the touch panel.
- Maintenance request informs administrator that some site needs a maintenance. For example projector air filter needs to be cleaned.
- Service request informs administrator that some service is required, for example projector lamp needs to be replaced.
- Security alert informs administrator about some security issue. For example projector lost network connectivity. It can indicate, that projector has been stolen.

All actions described above can be customized to perform the following tasks

- Display on administrator application
- Send information to predefined e-mail addresses
- Write to log file

### Control

Each site has set of predefined commands which can be executed by administrator. For example administrator can switch on / off the projector, set room preset or light scene, etc.

### Features

- Communication is secured by password and unique transaction ID to avoid unauthorised access.
- Each site offers additional information for administrator - owner, phone number, prestige, equipment list, number of seats, etc.
- Administrator can sort site view according site name, group, location, identification, connection, power and actions.

### Cue Site Manager consists of

- CSM Base - administrator application running on Windows PC with pcCUE-professional or ipCUE-omega or any cuenum2 12" touch panel
- CSM Data Provider - software running on one of the controller (touch panel) for each site being monitored.

### Order information

One CSM Base is necessary for every application and number of CSM Data Provider Site Licenses depends on number of monitored sites. All necessary hardware and / or pcCUE-professional have to be ordered separately.

### CSM Base

- All necessary software blocks for CSM incl. application template
- Product code CS0424

### CSM Data Provider Site License

- Product code CS0425

# PACKAGES

## Elite-A-7



Complete wired 7" touch panel control system enough to be the perfect control solution in medium sized applications. It includes wired tabletop touch panel, controller and accessories.

### Wired tabletop touch panel touchCUE-7

- Full motion video preview
- 7" active matrix touch screen display
- Resolution 800 x 480 pixels
- Wired Ethernet connection with Power over Ethernet
- One multifunctional button
- Admin Web pages for setup
- Aluminium enclosure
- Tilting tabletop stand

### Controller ipCUE-alpha

- Ethernet IP enabled
- Non-volatile flash memory for user application
- Onboard real time clock
- Control ports
  - 7x bi-directional serial
  - 8x IR/serial
  - 8x general I/O
  - 2x relay
- Admin Web pages for setup
- Front panel indicators for each control port
- 19" rack installation available with accessories

### Accessories

- Control adapters 4x IR Adapter /i
- Connector set, cables, power supplies

Product code ST0045

## Elite-S-7-W



Complete wired 7" touch panel control system enough to be the perfect control solution in medium sized applications. It includes wired on-wall touch panel, controller and accessories.

### Wired on-wall touch panel touchCUE-7-W

- Full motion video preview
- 7" active matrix touch screen display
- Resolution 800 x 480 pixels
- Wired Ethernet connection with Power over Ethernet
- One multifunctional button
- Admin Web pages for setup
- Aluminium enclosure
- On-wall adapter included

### Controller ipCUE-sigma

- Ethernet IP enabled
- Non-volatile flash memory for user application
- Onboard real time clock
- Control ports
  - 4x bi-directional serial
  - 3x IR /serial
  - 8x general I/O
  - 12x digital I/O
  - 8x potential free power relay 230 VAC, 10 A
- Admin Web pages for setup
- Front panel indicators for each control port
- DIN rail compatible enclosure

### Accessories

- Control adapters 2x IR Adapter /i
- Connector set, cables, power supplies

Product code ST0046

## Elite-S-7-B



Complete wired 7" touch panel control system enough to be the perfect control solution in medium sized applications. It includes wired built-in touch panel, controller and accessories.

### Wired built-in touch panel touchCUE-7-B

- Full motion video preview
- 7" active matrix touch screen display
- Resolution 800 x 480 pixels
- Wired Ethernet connection with Power over Ethernet
- One multifunctional button
- Admin Web pages for setup
- Aluminium front panel

### Controller ipCUE-sigma

- Ethernet IP enabled
- Non-volatile flash memory for user application
- Onboard real time clock
- Control ports
  - 4x bi-directional serial
  - 3x IR /serial
  - 8x general I/O
  - 12x digital I/O
  - 8x potential free power relay 230 VAC, 10 A
- Admin Web pages for setup
- Front panel indicators for each control port
- DIN rail compatible enclosure

### Accessories

- Touch panel back box
- Control adapters 2x IR Adapter /i
- Connector set, cables, power supplies

Product code ST0047

## Elite-A-12



Complete wired 12" touch panel control system enough to be the perfect control solution in large sized applications. It includes wired tabletop touch panel, controller and accessories.

### Wired tabletop touch panel touchCUE-12

- Full motion video preview
- 12.1" active matrix touch screen display
- Resolution 1280 x 800 pixels
- Wired Ethernet connection with Power over Ethernet
- One multifunctional button
- Admin Web pages for setup
- Aluminium enclosure
- Tilting tabletop stand

### Controller ipCUE-alpha

- Ethernet IP enabled
- Non-volatile flash memory for user application
- Onboard real time clock
- Control ports
  - 7x bi-directional serial
  - 8x IR/serial
  - 8x general I/O
  - 2x relay
- Admin Web pages for setup
- Front panel indicators for each control port
- 19" rack installation available with accessories

### Accessories

- Control adapters 4x IR Adapter /i
- Connector set, cables, power supplies

Product code ST0048

## Elite-S-12-W



Complete wired 12" touch panel control system enough to be the perfect control solution in large sized applications. It includes wired on-wall touch panel, controller and accessories.

### Wired on-wall touch panel touchCUE-12-W

- Full motion video preview
- 12.1" active matrix touch screen display
- Resolution 1280 x 800 pixels
- Wired Ethernet connection with Power over Ethernet
- One multifunctional button
- Admin Web pages for setup
- Aluminium enclosure
- On-wall adapter included

### Controller ipCUE-sigma

- Ethernet IP enabled
- Non-volatile flash memory for user application
- Onboard real time clock
- Control ports
  - 4x bi-directional serial
  - 3x IR /serial
  - 8x general I/O
  - 12x digital I/O
  - 8x potential free power relay 230 VAC, 10 A
- Admin Web pages for setup
- Front panel indicators for each control port
- DIN rail compatible enclosure

### Accessories

- Control adapters 2x IR Adapter /i
- Connector set, cables, power supplies

Product code ST0049

## Elite-S-12-B



Complete wired 12" touch panel control system enough to be the perfect control solution in large sized applications. It includes wired built-in touch panel, controller and accessories.

### Wired built-in touch panel touchCUE-12-B

- Full motion video preview
- 12.1" active matrix touch screen display
- Resolution 1280 x 800 pixels
- Wired Ethernet connection with Power over Ethernet
- One multifunctional button
- Admin Web pages for setup
- Aluminium front panel

### Controller ipCUE-sigma

- Ethernet IP enabled
- Non-volatile flash memory for user application
- Onboard real time clock
- Control ports
  - 4x bi-directional serial
  - 3x IR /serial
  - 8x general I/O
  - 12x digital I/O
  - 8x potential free power relay 230 VAC, 10 A
- Admin Web pages for setup
- Front panel indicators for each control port
- DIN rail compatible enclosure

### Accessories

- Touch panel back box
- Control adapters 2x IR Adapter /i
- Connector set, cables, power supplies

Product code ST0050

# PACKAGES

## Elite-A-4X02-R8



Cost-effective 3.5" complete wired control package enough to be the perfect control solution in small to medium sized applications. It includes wired on-wall touch panel, controller, power switching unit and accessories.

### Wired on-wall touch panel touchCUE-4X02-W

- 3.5" active matrix touch screen display
- Resolution 320 x 240 pixels
- Wired Ethernet connection with Power over Ethernet
- Four programmable buttons
- Admin Web pages for setup
- Built-in IR sensors
- On-wall mounting
- For all available enclosure types contact sales@cuesystem.com

### Controller ipCUE-alpha

- Ethernet IP enabled
- Non-volatile flash memory for user application
- Onboard real time clock
- Control ports
  - 7x bi-directional serial
  - 8x IR/serial
  - 8x general I/O
  - 2x relay
- Admin Web pages for setup
- Front panel indicators for each control port
- 19" rack installation available with accessories

### Switching unit relayCUE

- 8x power relay load up to 10 A
- Controlled by digital inputs and by serial channel

### Accessories

- Control adapters 4x IR Adapter /i
- Connector set, cables, power supplies

### Product codes

- ST0042-004 (stainless steel)
- ST0042-014 (graphite grey)

## Elite-S-4X02-B



Cost-effective complete 3.5" wired control package enough to be the perfect control solution in small to medium sized applications. It includes wired built-in touch panel, controller and accessories.

### Wired built-in touch panel touchCUE-4X02-B

- 3.5" active matrix touch screen display
- Resolution 320 x 240 pixels
- Wired Ethernet connection with Power over Ethernet
- Four programmable buttons
- Admin Web pages for setup
- Built-in IR sensors

### Controller ipCUE-sigma

- Ethernet IP enabled
- Non-volatile flash memory for user application
- Onboard real time clock
- Control ports
  - 4x bi-directional serial
  - 3x IR /serial
  - 8x general I/O
  - 12x digital I/O
  - 8x potential free power relay 230 VAC, 10 A
- Admin Web pages for setup
- Front panel indicators for each control port
- DIN rail compatible enclosure

### Accessories

- Touch panel back box
- Control adapters 2x IR Adapter /i
- Connector set, cables, power supplies

### Product code ST0044

## Elite-B-6X02



Cost-effective complete 6.4" wired control package enough to be the perfect control solution in small sized applications. It includes tabletop wired touch panel, controller and accessories.

### Wired tabletop touch panel touchCUE-6X02

- 6.4" active matrix touch screen display
- Resolution 640 x 480 pixels
- Wired Ethernet connection with Power over Ethernet
- Four programmable buttons
- Admin Web pages for setup
- Built-in light and motion sensors
- Tabletop stand
- For all available enclosure types contact sales@cuesystem.com

### Controller ipCUE-beta

- Ethernet IP enabled
- Non-volatile flash memory for user application
- Onboard real time clock
- Control ports
  - 3x bi-directional serial
  - 8x IR/serial
- Admin Web pages for setup
- Front panel indicators for each control port
- 19" rack installation available with accessories

### Accessories

- Control adapters 4x IR Adapter /i
- Connector set, cables, power supplies

### Product codes

- ST0041-004 (stainless steel)
- ST0041-014 (graphite grey)

## Elite-B-6X10-TD



Cost-effective complete 6.4" wireless control package enough to be the perfect control solution in small sized applications. It includes wireless touch panel, tabletop docking station, access point, controller and accessories.

### Wireless touch panel airCUE-6X10

- 6.4" active matrix touch screen display
- Resolution 640 x 480 pixels
- 802.11b/g Wi-Fi 2-way wireless communication
- Wired Ethernet connection with Power over Ethernet
- Four programmable buttons
- Admin Web pages for setup
- Built-in light and motion sensors
- Internal Li-Ion rechargeable battery pack
- For all available enclosure types contact sales@cuesystem.com

### Controller ipCUE-beta

- Ethernet IP enabled
- Non-volatile flash memory for user application
- Onboard real time clock
- Control ports
  - 3x bi-directional serial
  - 8x IR/serial
- Admin Web pages for setup
- Front panel indicators for each control port
- 19" rack installation available with accessories

### Accessories

- airCUE-6X Tabletop Docking Station
- Wi-Fi access point
- Control adapters 4x IR Adapter /i
- Connector set, cables, power supplies

### Product codes

- ST0038-004 (stainless steel)
- ST0038-014 (graphite grey)

## Elite-A-6X10-TD



Complete wireless 6.4" touch panel control system enough to be the perfect control solution in medium sized applications. It includes wireless touch panel, tabletop docking station, access point, controller and accessories.

### Wireless touch panel airCUE-6X10

- 6.4" active matrix touch screen display
- Resolution 640 x 480 pixels
- 802.11b/g Wi-Fi 2-way wireless communication
- Wired Ethernet connection with Power over Ethernet
- Four programmable buttons
- Admin Web pages for setup
- Built-in light and motion sensors
- Internal Li-Ion rechargeable battery pack
- For all available enclosure types contact sales@cuesystem.com

### Controller ipCUE-alpha

- Ethernet IP enabled
- Non-volatile flash memory for user application
- Onboard real time clock
- Control ports
  - 7x bi-directional serial
  - 8x IR/serial
  - 8x general I/O
  - 2x relay
- Admin Web pages for setup
- Front panel indicators for each control port
- 19" rack installation available with accessories

### Accessories

- airCUE-6X Tabletop Docking Station
- Wi-Fi access point
- Control adapters 4x IR Adapter /i
- Connector set, cables, power supplies

### Product codes

- ST0040-004 (stainless steel)
- ST0040-014 (graphite grey)

## Elite-A-8X10-TD



Complete 8.4" wireless touch panel control system enough to be the perfect control solution in medium sized applications. It includes wireless touch panel, tabletop docking station, access point, controller and accessories.

### Wireless touch panel airCUE-8X10

- 8.4" active matrix touch screen display
- Resolution 800 x 600 pixels
- 802.11b/g Wi-Fi 2-way wireless communication
- Wired Ethernet connection with Power over Ethernet
- Four programmable buttons
- Admin Web pages for setup
- Built-in light and motion sensors
- Internal Li-Ion rechargeable battery pack
- For all available enclosure types contact sales@cuesystem.com

### Controller ipCUE-alpha

- Ethernet IP enabled
- Non-volatile flash memory for user application
- Onboard real time clock
- Control ports
  - 7x bi-directional serial
  - 8x IR/serial
  - 8x general I/O
  - 2x relay
- Admin Web pages for setup
- Front panel indicators for each control port
- 19" rack installation available with accessories

### Accessories

- airCUE-8X Tabletop Docking Station
- Wi-Fi access point
- Control adapters 4x IR Adapter /i
- Connector set, cables, power supplies

### Product codes

- ST0039-004 (stainless steel)
- ST0039-014 (graphite grey)

## TOUCH PANEL CONTROLLERS

### uniCUE-7-B



The uniCUE-7-B built-in touch panel controller is innovative new kind of product combining touch panel and controller in one box. The 7" active matrix touch screen display offers resolution 800 x 480 pixels. Everything in the room can be controlled with its integrated control ports. This device offers cost effective one-box solution for meeting and conference rooms, boardrooms, classrooms, private houses etc. From design point of view this products is fully compatible with cuenium<sup>2</sup> touch panel product line. The front case is machined from a single billet of aluminium greatly improving the rigidity of the device.

- Full motion video preview
- Active matrix color LCD with LED backlight
- Display size 7" (177.8 mm) diagonal
- Resolution 800 x 480 pixels (WVGA)
- Display colors 32-bit (True Color)
- Transparency 8-bit Alpha blending
- Viewing angle ±80° horizontal, ±80° vertical
- Projective capacitive touch overlay
- One multifunctional button
- Built-in light and motion sensor
- Built-in IR transmitter and receiver
- RAM 256 MB RAM, microSD Card min. 4 GB
- Wired 10/100 BaseT LAN
- Power supply 24 VDC
- Control ports
  - 2x Bi-directional serial RS-232/422/485
  - 4x IR /serial output
  - 4x General I/O (analog input or digital output)
  - 2x Relay 24 V, 0.5 A
- Audio
  - Built-in microphone and speakers
  - Line in, line out
- Web server and Admin Web pages
- Aluminium front case
- Dimensions 198 x 145 x 60 mm
- Weight 1.1 kg
- Back box CS0409 available (it has to be ordered separately)

Product code CS0388

### uniCUE-12-B



The uniCUE-12-B built-in touch panel controller is innovative new kind of product combining touch panel and controller in one box. The 12.1" active matrix touch screen display offers resolution 1280 x 800 pixels. Everything in the room can be controlled with its integrated control ports. This device offers cost effective one-box solution for meeting and conference rooms, boardrooms, classrooms, private houses etc. From design point of view this products is fully compatible with cuenium<sup>2</sup> touch panel product line. The front case is machined from a single billet of aluminium greatly improving the rigidity of the device.

- Full motion video preview
- Active matrix color LCD with LED backlight
- Display size 12.1" (307.3 mm) diagonal
- Resolution 1280 x 800 pixels
- Display colors 32-bit (True Color)
- Transparency 8-bit Alpha blending
- Viewing angle ±80° horizontal, ±80° vertical
- Resistive membrane touch overlay
- One multifunctional button
- Built-in light and motion sensor
- Built-in IR transmitter and receiver
- RAM 256 MB RAM, microSD Card min. 4 GB
- Wired 10/100 BaseT LAN
- Power supply 24 VDC
- Control ports
  - 2x Bi-directional serial RS-232/422/485
  - 4x IR /serial output
  - 4x General I/O (analog input or digital output)
  - 2x Relay 24 V, 0.5 A
- Audio
  - Built-in microphone and speakers
  - Line in, line out
- Web server and Admin Web pages
- Aluminium front case
- Dimensions 320 x 225 x 61 mm
- Weight 1.4 kg
- Back box CS0409 available (it has to be ordered separately)

Product code CS0404

### Back Box



The metal back box is designed for pre-construction applications and allows install touch panel to all types of wall as well as to the table.

- Dimensions 189 x 135 x 46 mm, weight 0.5 kg

Product code CS0409

### Back Box



The metal back box is designed for pre-construction applications and allows install touch panel to all types of wall as well as to the table.

- Dimensions 189 x 135 x 46 mm, weight 0.5 kg

Product code CS0409

## WIRELESS TOUCH PANELS

### airCUE-7



Wireless 7" widescreen 800 x 480 pixels touch panel with Wi-Fi two-way communication. The case is machined from a single billet of aluminum, increasing weight but greatly improving the rigidity of the device.

- Full motion video preview
- Active matrix color LCD with LED backlight
- Display size 7" (177.8 mm) diagonal
- Resolution 800 x 480 pixels (WVGA)
- Display colors 32-bit (True Color)
- Transparency 8-bit Alpha blending
- Viewing angle ±80° horizontal, ±80° vertical
- Projective capacitive touch overlay
- One multifunctional button
- Built-in microphone and speakers
- Built-in light and motion sensor
- Built-in IR transmitter and receiver
- RAM 256 MB RAM, microSD Card min. 4 GB
- 12 V power supply for charging
- Wireless network, IEEE 802.11b/g Wi-Fi 2.4 GHz
- Web server and Admin Web pages
- Aluminium enclosure
- Dimensions 198 x 145 x 27 mm
- Weight 0.85 kg
- Tabletop docking station included

Product code CS0374



Tabletop charging station is delivered with an airCUE-7. Power to the docking station is provided by standard power supply 12 V.

- Compliant with power supply 12 VDC
- Dimensions 165 x 59 x 95 mm
- Weight 0.4 kg





# WIRELESS TOUCH PANELS

## airCUE-6X10



Wireless 6.4" touch panel with Wi-Fi two-way communication. Tabletop or wall docking stations are available for charging.

- Active matrix color LCD, size 6.4" diagonal
- Aspect ratio 4:3
- Resolution 640 x 480 pixels
- Display colors 16-bit (High Color)
- Resistive membrane touch overlay
- Built-in microphone, speaker
- Built-in light and motion sensor
- 4x programmable button
- 64 MB RAM, CompactFlash Card min. 1 GB
- Wired 10/100 BaseT LAN incl. PoE
- 24 V power supply for charging
- Optional Power over Ethernet power supply
- Wireless network, IEEE 802.11b/g
- Wi-Fi 2.4 GHz
- Wireless security WEP64, WEP128, WPA2
- Dimensions 216 x 145 x 25 mm
- Weight 0.75 kg\*
- For all available enclosure types contact sales@cuesystem.com
- Web server and Admin Web pages

### Product codes

- CS0305-004 (stainless steel)
- CS0305-014 (graphite grey)

## airCUE-6X Tabletop Docking Station



Tabletop charging station is an optional accessories for 6.4" airCUEs. Power to the docking station is provided by standard power supply delivered with a touch panel.

- Compliant with power supply 12 or 24 VDC
- Dimensions 216 x 147 x 108 mm
- Weight 1.1 kg\*
- For all available enclosure types contact sales@cuesystem.com

### Product codes

- CS0306-004 (stainless steel)
- CS0306-014 (graphite grey)

## airCUE-6X Wall Docking Station



On-wall charging station is an optional accessories for 6.4" airCUEs. Power to the docking station is provided by standard power supply delivered with a touch panel.

- Compliant with power supply 12 or 24 VDC
- Touch panel fixed by magnetic holders
- Dimensions 216 x 173 x 37 mm
- Weight 1.6 kg\*
- For all available enclosure types contact sales@cuesystem.com

### Product codes

- CS0307-004 (stainless steel)
- CS0307-014 (graphite grey)

## airCUE-8X10



Wireless 8.4" touch panel with Wi-Fi two-way communication. Tabletop or wall docking stations are available for charging.

- Active matrix color LCD, size 8.4" diagonal
- Aspect ratio 4:3
- Resolution 800 x 600 pixels
- Display colors 16-bit (High Color)
- Resistive membrane touch overlay
- Built-in microphone, speaker
- Built-in light and motion sensor
- 4x programmable button
- 64 MB RAM, CompactFlash Card min. 1 GB
- Wired 10/100 BaseT LAN incl. PoE
- 24 V power supply for charging
- Optional Power over Ethernet power supply
- Wireless network, IEEE 802.11b/g
- Wi-Fi 2.4 GHz
- Wireless security WEP64, WEP128, WPA2
- Dimensions 263 x 175 x 25 mm
- Weight 1.1 kg\*
- For all available enclosure types contact sales@cuesystem.com
- Web server and Admin Web pages

### Product codes

- CS0300-004 (stainless steel)
- CS0300-014 (graphite grey)

## airCUE-8X Tabletop Docking Station



Tabletop charging station is an optional accessories for 8.4" airCUEs. Power to the docking station is provided by standard power supply delivered with a touch panel.

- Compliant with power supply 12 or 24 VDC
- Dimensions 263 x 171 x 116 mm
- Weight 1.6 kg\*
- For all available enclosure types contact sales@cuesystem.com

### Product codes

- CS0301-004 (stainless steel)
- CS0301-014 (graphite grey)

## airCUE-8X Wall Docking Station



On-wall charging station is an optional accessories for 8.4" airCUEs. Power to the docking station is provided by standard power supply delivered with a touch panel.

- Compliant with power supply 12 or 24 VDC
- Touch panel fixed by magnetic holders
- Dimensions 263 x 203 x 37 mm
- Weight 1.9 kg\*
- For all available enclosure types contact sales@cuesystem.com

### Product codes

- CS0302-004 (stainless steel)
- CS0302-014 (graphite grey)

\* Product weight may vary according to type of enclosure.

# WIRED TOUCH PANELS

## touchCUE-7



Tabletop wired 7" widescreen 800 x 480 pixels touch panel with Ethernet communication and Power over Ethernet (PoE) power supply. The case is machined from a single billet of aluminum, increasing weight but greatly improving the rigidity of the device.

- Full motion video preview
- Active matrix color LCD with LED backlight
- Display size 7" (177.8 mm) diagonal
- Resolution 800 x 480 pixels (WVGA)
- Display colors 32-bit (True Color)
- Transparency 8-bit Alpha blending
- Viewing angle  $\pm 80^\circ$  horizontal,  $\pm 80^\circ$  vertical
- Projective capacitive touch overlay
- One multifunctional button
- Built-in microphone and speakers
- Built-in light and motion sensor
- Built-in IR transmitter and receiver
- RAM 256 MB RAM, microSD Card min. 4 GB
- Wired 10/100 BaseT LAN
- Power over Ethernet (PoE) power supply
- Web server and Admin Web pages
- Aluminium enclosure
- Dimensions 198 x 150 x 122 mm
- Weight 1.1 kg
- Tilting tabletop stand included

Product code CS0375

## touchCUE-7-W



On-wall wired 7" widescreen 800 x 480 pixels touch panel with Ethernet communication and Power over Ethernet (PoE) power supply. The case is machined from a single billet of aluminum, increasing weight but greatly improving the rigidity of the device.

- Full motion video preview
- Active matrix color LCD with LED backlight
- Display size 7" (177.8 mm) diagonal
- Resolution 800 x 480 pixels (WVGA)
- Display colors 32-bit (True Color)
- Transparency 8-bit Alpha blending
- Viewing angle  $\pm 80^\circ$  horizontal,  $\pm 80^\circ$  vertical
- Projective capacitive touch overlay
- One multifunctional button
- Built-in microphone and speakers
- Built-in light and motion sensor
- Built-in IR transmitter and receiver
- RAM 256 MB RAM, microSD Card min. 4 GB
- Wired 10/100 BaseT LAN
- Power over Ethernet (PoE) power supply
- Web server and Admin Web pages
- Aluminium enclosure
- Dimensions 198 x 145 x 29 mm
- Weight 1.1 kg
- VESA standard compatible
- Wall mount adapter included

Product code CS0377

## touchCUE-7-B

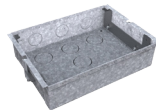


Built-in wired 7" widescreen 800 x 480 pixels touch panel with Ethernet communication and Power over Ethernet (PoE) power supply. The front case is machined from a single billet of aluminum, increasing weight but greatly improving the rigidity of the device.

- Full motion video preview
- Active matrix color LCD with LED backlight
- Display size 7" (177.8 mm) diagonal
- Resolution 800 x 480 pixels (WVGA)
- Display colors 32-bit (True Color)
- Transparency 8-bit Alpha blending
- Viewing angle  $\pm 80^\circ$  horizontal,  $\pm 80^\circ$  vertical
- Projective capacitive touch overlay
- One multifunctional button
- Built-in microphone and speakers
- Built-in light and motion sensor
- Built-in IR transmitter and receiver
- RAM 256 MB RAM, microSD Card min. 4 GB
- Wired 10/100 BaseT LAN
- Power over Ethernet (PoE) power supply
- Web server and Admin Web pages
- Aluminium front case
- Dimensions 198 x 145 x 60 mm
- Weight 1.1 kg
- Back box available (it has to be ordered separately)

Product code CS0376

### Back Box



The metal back box is designed for pre-construction applications and allows install touch panel to all types of wall as well as to the table.

- Dimensions 189 x 135 x 46 mm, weight 0.5 kg

Product code CS0409

## touchCUE-12



Tabletop wired 12.1" widescreen 1280 x 800 pixels touch panel with Ethernet communication and Power over Ethernet (PoE) power supply. The case is machined from a single billet of aluminum, increasing weight but greatly improving the rigidity of the device.

- Full motion video preview
- Active matrix color LCD with LED backlight
- Display size 12.1" (307.3 mm) diagonal
- Resolution 1280 x 800 pixels
- Display colors 32-bit (True Color)
- Transparency 8-bit Alpha blending
- Viewing angle  $\pm 80^\circ$  horizontal,  $\pm 80^\circ$  vertical
- Resistive membrane touch overlay
- One multifunctional button
- Built-in microphone and speakers
- Built-in light and motion sensor
- Built-in IR transmitter and receiver
- RAM 256 MB RAM, microSD Card min. 4 GB
- Wired 10/100 BaseT LAN
- Power over Ethernet (PoE+) power supply
- Web server and Admin Web pages
- Aluminium enclosure
- Dimensions 320 x 239 x 147 mm
- Weight 1.4 kg
- Tilting tabletop stand included

Product code CS0382

## touchCUE-12-W



On-wall wired 12.1" widescreen 1280 x 800 pixels touch panel with Ethernet communication and Power over Ethernet (PoE) power supply. The case is machined from a single billet of aluminum, increasing weight but greatly improving the rigidity of the device.

- Full motion video preview
- Active matrix color LCD with LED backlight
- Display size 12.1" (307.3 mm) diagonal
- Resolution 1280 x 800 pixels
- Display colors 32-bit (True Color)
- Transparency 8-bit Alpha blending
- Viewing angle  $\pm 80^\circ$  horizontal,  $\pm 80^\circ$  vertical
- Resistive membrane touch overlay
- One multifunctional button
- Built-in microphone and speakers
- Built-in light and motion sensor
- Built-in IR transmitter and receiver
- RAM 256 MB RAM, microSD Card min. 4 GB
- Wired 10/100 BaseT LAN
- Power over Ethernet (PoE+) power supply
- Web server and Admin Web pages
- Aluminium enclosure
- Dimensions 320 x 225 x 30 mm
- Weight 1.4 kg
- VESA standard compatible
- Wall mount adapter included

Product code CS0384

## touchCUE-12-B



Built-in wired 12.1" widescreen 1280 x 800 pixels touch panel with Ethernet communication and Power over Ethernet (PoE) power supply. The front case is machined from a single billet of aluminum, increasing weight but greatly improving the rigidity of the device.

- Full motion video preview
- Active matrix color LCD with LED backlight
- Display size 12.1" (307.3 mm) diagonal
- Resolution 1280 x 800 pixels
- Display colors 32-bit (True Color)
- Transparency 8-bit Alpha blending
- Viewing angle  $\pm 80^\circ$  horizontal,  $\pm 80^\circ$  vertical
- Resistive membrane touch overlay
- One multifunctional button
- Built-in microphone and speakers
- Built-in light and motion sensor
- Built-in IR transmitter and receiver
- RAM 256 MB RAM, microSD Card min. 4 GB
- Wired 10/100 BaseT LAN
- Power over Ethernet (PoE+) power supply
- Web server and Admin Web pages
- Aluminium front case
- Dimensions 320 x 225 x 61 mm
- Weight 1.4 kg
- Back box available (it has to be ordered separately)

Product code CS0383

### Back Box



The metal back box is designed for pre-construction applications and allows install touch panel to all types of wall as well as to the table.

- Dimensions 189 x 135 x 46 mm, weight 0.5 kg

Product code CS0409

# WIRED TOUCH PANELS

## touchCUE-4X02



Wired 3.5" tabletop touch panel with Ethernet communication and PoE power supply.

- Active matrix color LCD with LED backlight
- Size 3.5" diagonal, aspect ratio 4:3
- Resolution 320 x 240 pixels
- Display colors 16-bit (High Color)
- Resistive membrane touch overlay
- 4x programmable button, built-in light sensor
- 64 MB RAM, CompactFlash Card min. 1 GB
- Wired 10/100 BaseT LAN incl. PoE
- Power over Ethernet (PoE) power supply
- Dimensions 148 x 90 x 24 mm, weight 0.5 kg

### Product codes

- CS0352-004 (stainless steel)
- CS0352-014 (graphite grey)

## touchCUE-4X02-W



Wired 3.5" on-wall touch panel with Ethernet communication and PoE power supply.

- Active matrix color LCD with LED backlight
- Size 3.5" diagonal, aspect ratio 4:3
- Resolution 320 x 240 pixels
- Display colors 16-bit (High Color)
- Resistive membrane touch overlay
- 4x programmable button, built-in light sensor
- 64 MB RAM, CompactFlash Card min. 1 GB
- Wired 10/100 BaseT LAN incl. PoE
- Dimensions 148 x 90 x 24 mm, weight 0.5 kg
- Compatible with European wall boxes

### Product codes

- CS0326-004 (stainless steel)
- CS0326-014 (graphite grey)

## touchCUE-6X02



Wired 6.4" tabletop touch panel with Ethernet communication and PoE power supply.

- Active matrix color LCD, size 6.4" diagonal
- Aspect ratio 4:3
- Resolution 640 x 480 pixels
- Display colors 16-bit (High Color)
- Resistive membrane touch overlay
- 4x programmable button, built-in light sensor
- 64 MB RAM, CompactFlash Card min. 1 GB
- Wired 10/100 BaseT LAN incl. PoE
- Dimensions 216 x 145 x 25 mm, weight 1.3 kg

### Product codes

- CS0286-004 (stainless steel)
- CS0286-014 (graphite grey)

## touchCUE-6X02-W



Wired 6.4" on-wall touch panel with Ethernet communication and PoE power supply.

- Active matrix color LCD, size 6.4" diagonal
- Aspect ratio 4:3
- Resolution 640 x 480 pixels
- Display colors 16-bit (High Color)
- Resistive membrane touch overlay
- 4x programmable button, built-in light sensor
- 64 MB RAM, CompactFlash Card min. 1 GB
- Wired 10/100 BaseT LAN incl. PoE
- Dimensions 216 x 145 x 25 mm, weight 1.3 kg
- Compatible with European wall boxes

### Product codes

- CS0351-004 (stainless steel)
- CS0351-014 (graphite grey)

## touchCUE-8X02



Wired 8.4" tabletop touch panel with Ethernet communication and PoE power supply.

- Active matrix color LCD, size 8.4" diagonal
- Aspect ratio 4:3
- Resolution 800 x 600 pixels
- Display colors 16-bit (High Color)
- Resistive membrane touch overlay
- 4x programmable button, built-in light sensor
- 64 MB RAM, CompactFlash Card min. 1 GB
- Wired 10/100 BaseT LAN incl. PoE
- Dimensions 263 x 175 x 25 mm, weight 1.5 kg

### Product codes

- CS0285-004 (stainless steel)
- CS0285-014 (graphite grey)

## touchCUE-8X02-W



Wired 8.4" on-wall touch panel with Ethernet communication and PoE power supply.

- Active matrix color LCD, size 8.4" diagonal
- Aspect ratio 4:3
- Resolution 800 x 600 pixels
- Display colors 16-bit (High Color)
- Resistive membrane touch overlay
- 4x programmable button, built-in light sensor
- 64 MB RAM, CompactFlash Card min. 1 GB
- Wired 10/100 BaseT LAN incl. PoE
- Dimensions 263 x 175 x 25 mm, weight 1.5 kg
- Compatible with European wall boxes

### Product codes

- CS0350-004 (stainless steel)
- CS0350-014 (graphite grey)

## touchCUE-4X02-B



Wired 3.5" built-in touch panel with Ethernet communication and PoE power supply.

- Active matrix color LCD with LED backlight
- Size 3.5" diagonal, aspect ratio 4:3
- Resolution 320 x 240 pixels
- Display colors 16-bit (High Color)
- Resistive membrane touch overlay
- 4x programmable button, built-in light sensor
- 64 MB RAM, CompactFlash Card min. 1 GB
- Wired 10/100 BaseT LAN incl. PoE
- Dimensions 141 x 108 x 37 mm, weight 0.5 kg
- Stainless steel enclosure
- Back box CS0344-MB it has to be ordered separately

Product code CS0344-004

## touchCUE-4X02-B Back Box



The back box is an optional accessories for built-in touch panel. It is designed for pre-construction applications and allows install touch panel to all types of wall as well as to the table.

- Metal enclosure
- Dimensions 135 x 105 x 55 mm
- Weight 0.4 kg

Product code CS0344-MB

# CONTROLLERS

## controlCUE-one



Ethernet IP enabled high-end controller equipped with variety types of control ports. It is at least ten times more powerful compare to ipCUE controllers lineup. The controlCUE-one is recommended for medium to large scale applications. Enclosure allows installation to 19" rack using Rack Mounting kit.

- Modern ARM® processor platform
- Internal RAM 256 MB RAM
- Internal microSD Card min. 4 GB
- Wired 10/100 BaseT LAN
- Front panel indicators for each control port
- IR code capture
- IR wireless control panel link
- Onboard real time clock with battery backup
- Web server and Admin Web pages for setup
- Power supply 24 VDC
- Control ports
  - 2x Bi-directional serial RS-232/422/485
  - 4x IR /serial output
  - 4x General I/O (analog input or digital output)
  - 2x Relay 24 V, 0.5 A
- Audio
  - Line in, line out
- Aluminium enclosure
- Dimensions 210 x 43.5 x 92 mm
- Weight 0.5 kg

Product code CS0412

## ipCUE-alpha



Ethernet IP enabled controller equipped with variety types of control ports is designed for medium to large scale applications. Enclosure allows installation to 19" rack using Rack Mounting kit.

- Front panel indicators for each control port
- IR code capture, IR wireless control panel link
- Onboard real time clock with battery backup
- Non-volatile flash memory for user application
- Internal RAM 16 MB, internal flash 16 MB
- Web server and Admin Web pages for setup
- Wired 10/100 BaseT LAN
- Power supply 24 VDC
- Control ports
  - 2x Bi-directional serial RS-232
  - 4x Bi-directional serial RS-232/422/485
  - 1x Bi-directional serial RS-485
  - 8x IR /serial output
  - 8x General I/O (analog input or digital output)
  - 2x Relay 24 V, 0.5 A
- Aluminium enclosure
- Dimensions 210 x 43.5 x 92 mm
- Weight 0.6 kg

Product code CS0251

## ipCUE-beta



Cost-effective Ethernet IP enabled controller equipped with IR and serial control ports. It is suitable for board room and for living room control. Enclosure allows installation to 19" rack using Rack Mounting kit.

- Front panel indicators for each control port
- IR code capture, IR wireless control panel link
- Onboard real time clock with battery backup
- Non-volatile flash memory for user application
- Internal RAM 16 MB, internal flash 16 MB
- Web server and Admin Web pages for setup
- Wired 10/100 BaseT LAN
- Power supply 24 VDC
- Control ports
  - 2x Bi-directional serial RS-232
  - 1x Bi-directional serial RS-485
  - 8x IR /serial output
- Aluminium enclosure
- Dimensions 210 x 43.5 x 92 mm
- Weight 0.5 kg

Product code CS0252

## ipCUE-delta



Ethernet IP enabled controller equipped with variety types of control ports is designed for large scale applications. Enclosure allows installation to 19" rack using Rack Mounting kit.

- Front panel indicators for each control port
- IR code capture, IR wireless control panel link
- Onboard real time clock with battery backup
- Non-volatile flash memory for user application
- Internal RAM 16 MB, internal flash 16 MB
- Web server and Admin Web pages for setup
- Wired 10/100 BaseT LAN
- Power supply 24 VDC
- Control ports
  - 2x Bi-directional serial RS-232
  - 4x Bi-directional serial RS-232/422/485
  - 1x Bi-directional serial RS-485
  - 8x IR /serial output
  - 8x General I/O (analog input or digital output)
  - 4x Analog output 0 - 10 V, 16x Relay 24 V, 0.5 A
- Aluminium enclosure
- Dimensions 421 x 43.5 x 92 mm
- Weight 0.9 kg

Product code CS0267

## ipCUE-epsilon



Ethernet IP enabled controller equipped with variety types of control ports is designed for medium scale applications. Enclosure allows installation to 19" rack using Rack Mounting kit.

- Front panel indicators for each control port
- IR code capture, IR wireless control panel link
- Onboard real time clock with battery backup
- Non-volatile flash memory for user application
- Internal RAM 16 MB, internal flash 16 MB
- Web server and Admin Web pages for setup
- Wired 10/100 BaseT LAN
- Power supply 24 VDC
- Control ports
  - 2x Bi-directional serial RS-232
  - 1x Bi-directional serial RS-485
  - 8x IR /serial output
  - 8x General I/O (analog input or digital output)
  - 8x Relay 24 V, 0.5 A
  - 4x Analog output 0 - 10 V
- Aluminium enclosure
- Dimensions 210 x 43.5 x 92 mm
- Weight 0.6 kg

Product code CS0268

## ipCUE-omega



The ipCUE-omega is powerful IP enabled unit that serves as a controller, server, touch monitor interface and any display device interface. It allows to run standard projects created in Cue Visual Composer. Typically it is used as a core unit for ready to use applications (e.g. Cue Reservation System, Cue Site Manager).

- XPL2 (Cue Visual Composer) compatible
- Dual-Core Intel® Atom™ processor
- Internal SATA 2.5" solid state disk for operating system, user application and user data
- Internal RAM 2 GB
- Real time clock with battery backup for scheduled applications
- Wired 10/100/1000 BaseT Ethernet
- 2x USB 3.0, 4x USB 2.0 ports
- DVI output up to 1920 x 1200 pixels
- HDMI output up to 1920 x 1080 pixels
- Line audio input and output
- Microphone input
- Power supply 12 VDC
- Dimensions 192 x 62 x 210 mm
- Weight 1.5 kg
- Metal enclosure
- Fanless and noiseless passive cooling

Product code CS0411

## CONTROLLERS

### ipCUE-gamma



Ethernet IP enabled controller equipped with variety types of control ports. Enclosure allows simple installation using standard DIN rail. This type of controller is suitable for central home control in connection with power switching units, dimmers and other interfaces.

- Front panel indicators for each control port
- Compact enclosure
- Onboard real time clock with battery backup
- Non-volatile flash memory for user application
- Internal RAM 16 MB, internal flash 16 MB
- Web server and Admin Web pages for setup
- Wired 10/100 BaseT LAN
- Power supply 24 VDC
- Control ports
  - 2x Bi-directional serial RS-232
  - 1x Bi-directional serial RS-485
  - 2x IR /serial output
  - 8x General I/O (analog input or digital output)
  - 2x Relay 24 V, 0.5 A
- Plastic DIN rail compatible enclosure
- Dimensions 106 x 90 x 58 mm
- Weight 0.4 kg

Product code CS0253

### ipCUE-sigma



Ethernet IP enabled controller equipped with variety types of control ports incl. eight power relays 230 V. Enclosure allows simple installation using standard DIN rail. This type of controller is designed especially for one-box room control and for central home control.

- Front panel indicators for each control port
- IR code capture, IR wireless control panel link
- Onboard real time clock with battery backup
- Non-volatile flash memory for user application
- Internal RAM 16 MB, internal flash 16 MB
- Web server and Admin Web pages for setup
- Wired 10/100 BaseT LAN
- Power supply 24 VDC
- Control ports
  - 4x Bi-directional serial RS-232/422/485
  - 3x IR /serial output
  - 8x General I/O (analog input or digital output)
  - 12x Digital I/O (digital input contact closure / TTL or digital output)
  - 8x Potential free power relay 230 VAC, 10 A
- Plastic DIN rail compatible enclosure
- Dimensions 210 x 90 x 58 mm
- Weight 1.0 kg

Product code CS0333

## ACCESSORIES

### ipCUE Rack Mounting Kit

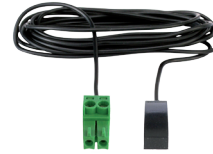


The ipCUE Rack Mounting Kit provides simple solution for installing ipCUE controllers and rfbaseCUE to the 19" rack. It allows install two half-rack sized ipCUEs or one full-sized ipCUE.

- Stainless steel enclosure
- Dimensions Rack 19", 1 U
- Weight 1.3 kg

Product code CS0251-MR

### IR Adapter /i



The IR Adapter /i is an infrared emitter used for controlling AV devices equipped with IR control capabilities. It is fastened on the receiver window of the AV device using a double-sided adhesive tape. Cable length 2 m.

Product code CS0256

### Opto-Input Adapter /i



Any status indicator on the controlled device can be read using the Opto-Input Adapter /i photosensitive cell. The Opto-Input Adapter /i is fastened on the indicator using a double-sided adhesive tape. Cable length 2 m.

Product code CS0257

### IR Sprayer

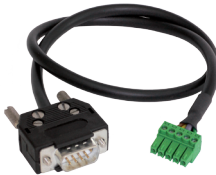


The IR Sprayer amplifies and emits infrared control signal from controller's IR / serial output. It allows control multiple IR controllable devices by single transmitting unit.

Product codes

- CS0295 (IR Sprayer)
- CS0299 (IR Sprayer incl. Wall Mounting Adapter)

### Serial IO Cable DTE /i



The Serial IO Cable DTE /i allows system connectivity to controlled devices that are equipped with RS-232 serial communication. Device connector DB-9-M.

Product codes

- CA0181-P05 (length 0.5 m)
- CA0181-P30 (length 3.0 m)
- CA0181-PU (user cable length)

### Serial IO Cable DCE /i



The Serial IO Cable DCE /i allows system connectivity to controlled devices that are equipped with RS-232 serial communication. Device connector DB-9-F.

Product codes

- CA0182-P05 (length 0.5 m)
- CA0182-P30 (length 3.0 m)
- CA0182-PU (user cable length)

### CUEwire Splitter



The CUE wire Splitter is a device that enables connection up to 4 devices to one controller with a use of CUE wire. Power supply 24 VDC is connected using dedicated 2-pin connector. Plastic enclosure is designed for DIN rail installation.

Product code CS0232

### Cable RS-485 to PEbus



This cable is used for RS-485 serial connection between controller and relayCUE-8 or Power Express unit.

Product code CA0183

# WIRELESS BUTTON PANELS

## irCUE



Wireless infrared handheld remote control panel equipped with a distinctive enclosure.

- Totally 33 buttons divided into groups
- Dedicated buttons for most frequent functions
- Built-in Li-Ion rechargeable battery pack
- Replaceable plastic part of front panel allows custom engraved button labels
- One-way infrared communication
- Quick charging by delivered tabletop docking station
- Power supply 12 VDC for charging
- Dimensions 55 x 236 x 21 mm, weight 0.4 kg\*

### Product codes

- CS0324-004 (stainless steel)
- CS0324-014 (graphite grey)

## Tx Time Transmitters



Wall mounted transmitter corresponds with the range of ABB switches. It is possible to mount it everywhere using screws or adhesive tape.

- Two and four buttons models available
- No need to cut the walls
- Radio frequency 433.92 MHz
- Max. range 60 m
- Lithium battery 3 V, CR 2430
- Battery lifetime up to 10 years
- Plastic enclosure, protection IP20
- Dimensions 83 x 81 x 16 mm, weight 0.1 kg
- For all enclosures see Product Cut Sheet

### Product codes

- CS0310-401 (two buttons, White / Ice White)
- CS0311-401 (four buttons, White / Ice White)

## Tx Element Transmitters



Wall mounted transmitter corresponds with the range of ABB switches. It is possible to mount it everywhere using screws or adhesive tape.

- Two and four buttons models available
- No need to cut the walls
- Radio frequency 433.92 MHz
- Max. range 60 m
- Lithium battery 3 V, CR 2430
- Battery lifetime up to 10 years
- Plastic enclosure, protection IP20
- Dimensions 88 x 81 x 16 mm, weight 0.1 kg
- For all enclosures see Product Cut Sheet

### Product codes

- CS0312-401 (two buttons, White / Ice White)
- CS0313-401 (four buttons, White / Ice White)

## irCUE Receiver 485



The irCUE Receiver 485 links IR wireless control panels to the controller and it is designed for ceiling mounting. Using multiple IR receivers within the unit, the irCUE Receiver 485 provides signal receiving in a horizontal plane from all directions.

- One-way IR receiving
- Receiving in horizontal plane 0° - 360°
- Receiving in vertical plane 60°
- Serial communication RS-485
- Fully compatible with all ipCUE controllers
- Power supply 24 VDC
- Diameter 81 mm, height 104 mm
- Weight 0.1 kg
- Metal enclosure with plastic cover

Product code CS0169

## Tx Pocket Transmitters



Portable wireless transmitters equipped with one, two or four pushbuttons.

- One, two and four buttons models available
- Put away holder supplied with Tx Pocket 1 and Tx Pocket 4
- Radio frequency 433.92 MHz
- Max. range 40 - 50 m
- Lithium or alkaline battery
- Battery lifetime up to 3 years
- Plastic enclosure

### Product codes

- CS0314-401 (Tx Pocket 1)
- CS0315-401 (Tx Pocket 4)
- CS0316-401 (Tx Key)
- CS0317-401 (Tx Cross 4)

## Rx1 DIN /Data Receiver



The Rx1 DIN /Data is a DIN rail receiver. It is a complete receiver, which is equipped with inputs for antenna or for external receiver Rx Ext.

- Receiver for Tx Time, Tx Element and Tx Pocket transmitters
- Wireless communication RF
- Radio frequency 433.92 MHz
- Bi-directional RS-232 port
- Power supply 230 VAC / 50 Hz, 4 W
- Dimensions 53 x 90 x 58 mm, weight 0.25 kg
- Plastic DIN rail compatible enclosure
- External receiver connected by two-wire cable

### Product codes

- CS0318-401 (receiver)
- CS0319-401 (external receiver Rx Ext)

# WIRED BUTTON PANELS

## keypadCUE-8-L-T



The keypadCUE-8-L-T is eight buttons tabletop keypad. Custom button labels can be engraved or printed on a printer.

- 8x black plastic button
- User printed or plastic engraved button labels
- 8x programmable LED
- IR sensor for wireless control panel link
- Serial communication RS-485
- Power supply 24 VDC
- Dimensions 140 x 90 x 19 mm, weight 0.4 kg

Product codes

- CS0398-004 (stainless steel)
- CS0398-014 (graphite grey)

## keypadCUE-8-E



The eight buttons on-wall mounting keypad compatible with standard European wall boxes. Custom button labels can be engraved.

- 8x black plastic button
- Plastic user engraved button labels
- 8x programmable LED
- IR sensor for wireless control panel link
- Serial communication RS-485
- Power supply 24 VDC
- Dimensions 140 x 90 x 19 mm, weight 0.4 kg
- On-wall mounting compatible with standard European wall boxes (60 mm screw distance)

Product codes

- CS0288-004 (stainless steel)
- CS0288-014 (graphite grey)

## keypadCUE-8-E-T



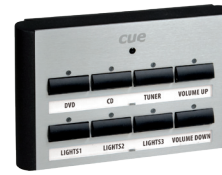
The keypadCUE-8-E-T is eight buttons tabletop keypad. Custom button labels can be engraved.

- 8x black plastic button
- Plastic user engraved button labels
- 8x programmable LED
- IR sensor for wireless control panel link
- Serial communication RS-485
- Power supply 24 VDC
- Dimensions 140 x 90 x 19 mm, weight 0.4 kg
- For all available enclosure types contact sales@cuesystem.com

Product codes

- CS0399-004 (stainless steel)
- CS0399-014 (graphite grey)

## keypadCUE-8-L



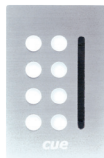
The eight buttons on-wall mounting keypad compatible with standard European wall boxes. Custom button labels can be engraved or printed.

- 8x black plastic button
- User printed or plastic engraved button labels
- 8x programmable LED
- IR sensor for wireless control panel link
- Serial communication RS-485
- Power supply 24 VDC
- Dimensions 140 x 90 x 19 mm, weight 0.4 kg
- On-wall mounting compatible with standard European wall boxes (60 mm screw distance)

Product codes

- CS0287-004 (stainless steel)
- CS0287-014 (graphite grey)

## keypadCUE-1G

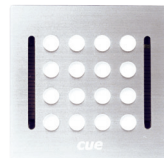


The built-in keypad provides eight buttons with backlight and programmable indication. Custom button labels can be printed on a transparent foil.

- 8x round button
- Programmable two levels red back-light for each button
- 1x 20-LEDs bar graph
- Serial communication RS-485
- Power supply 24 VDC
- Dimensions 69 x 108 x 50 mm
- Weight 0.2 kg
- Back box included

Product code CS0221

## keypadCUE-2G

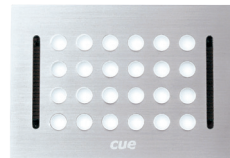


The built-in keypad provides sixteen buttons with backlight and programmable indication. Custom button labels can be printed on a transparent foil.

- 16x round button
- Programmable two levels red back-light for each button
- 2x 20-LEDs bar graph
- Serial communication RS-485
- Power supply 24 VDC
- Dimensions 110 x 108 x 50 mm
- Weight 0.4 kg
- Back box included

Product code CS0222

## keypadCUE-3G



The built-in keypad provides twenty four buttons with backlight and programmable indication. Custom button labels can be printed on a transparent foil.

- 24x round button
- Programmable two levels red back-light for each button
- 2x 20-LEDs bar graph
- Serial communication RS-485
- Power supply 24 VDC
- Dimensions 155 x 108 x 50 mm
- Weight 0.7 kg
- Back box included

Product code CS0223

# INTERFACES

## smartCUE-zero



Ultra-compact interface smartCUE-zero allows to control devices from a controller or touch panel over an Ethernet network. Using this unit the number of control ports can be cost-effectively expanded. Additionally it simplifies control to equipment located extended distances from a controller.

- Wired 10/100 BaseT Ethernet
- Power over Ethernet power supply
- Control ports
  - 1x Bi-directional serial RS-232
  - 1x Bi-directional serial RS-232/422/485
  - 4x Digital I/O
- Front panel indicators for each control port
- Integrated web server for setup
- Aluminium enclosure
- Dimensions 105 x 43.5 x 92 mm
- Weight 0.3 kg

Product code CS0421



## smartCUE-zero-wifi



Ultra-compact interface smartCUE-zero-wifi allows to control devices from a controller or touch panel over a wireless network. Using this unit the number of control ports can be cost-effectively expanded. Additionally it simplifies control to equipment located extended distances from a controller.

- Wireless network, IEEE 802.11b/g
- Wi-Fi 2.4 GHz
- Power supply 12 to 24 VDC
- Control ports
  - 1x Bi-directional serial RS-232
  - 1x Bi-directional serial RS-232/422/485
  - 4x Digital I/O
- Front panel indicators for each control port
- Integrated web server for setup
- Aluminium enclosure
- Dimensions 105 x 43.5 x 92 mm
- Weight 0.3 kg

Product code CS0423



## sensorCUE



The sensorCUE is temperature and daylight combo sensor. Temperature sensor can be used for temperature monitoring and for heating control. Daylight sensor allows controller to automatically dim lights when available daylight is high and brighten lights when daylight is low in order to maintain a specific light level in the environment.

- Temperature measurement -55 to +125°C
- Integrated daylight sensor may be calibrated for day / night light level recognition
- Serial communication RS-485
- Power supply 24 VDC
- Metal enclosure, protection IP43
- Dimensions 80 x 30 x 15 mm, weight 0.2 kg

Product code CS0265

## sensorCUE-W



The sensorCUE-W is temperature and daylight combo sensor for indoor use. Temperature sensor can be used for temperature monitoring and for heating control. Daylight sensor allows controller to automatically dim lights to maintain a specific light level in the environment.

- Temperature measurement -20 to +50°C
- Integrated daylight sensor may be calibrated for day / night light level recognition
- Serial communication RS-485
- Power supply 24 VDC
- Plastic enclosure compatible with standard European electrical wall box and with Time and Element design series of ABB switches
- Dimensions 83 x 81 x 16 mm, weight 0.1 kg

Product code CS0289-101

## inputCUE



The inputCUE connects up to eight contacts (for example wall switches) to a control system. The enclosure allows simple installation on a DIN rail.

- 8x Potential free contact input
- Serial communication RS-485
- LED indicator of serial channel activity
- Address setting by DIP switch
- Power supply 24 VDC
- Plastic DIN rail compatible enclosure
- Dimensions 53 x 90 x 58 mm, weight 0.3 kg

Product code CS0191

## inputCUE-W



The inputCUE-W connects up to eight contacts (for example wall switches) and one temperature sensor Pt1000 to a control system. The enclosure allows simple installation into standard European electrical wall box.

- 8x Potential free contact input
- 8x Digital output TTL suitable for LED
- 1x Input for Pt1000 temperature sensor (temperature sensor Pt1000 not delivered)
- Serial communication RS-485
- Power supply 24 VDC
- Compatible with European wall box
- Diameter 50 mm, depth 21 mm, weight 0.1 kg
- Delivered with IO cables and connectors

Product code CS0334



# INTERFACES

## sbiCUE-DMX



The sbiCUE-DMX is a universal interface of DMX512 bus with a separate input and output of the bus. The unit enables a reception, transmission and a merge of the full range of 512 DMX channels. The unit is controlled by serial channel RS-232.

- DMX512 input, full range of 512 channels
- DMX512 output, full range of 512 channels
- Serial communication RS-232
- Front panel indicator of DMX activity
- Power supply 24 VDC
- Plastic DIN rail compatible enclosure
- Dimensions 53 x 90 x 58 mm, weight 0.3 kg

Product code CS0201

## PEC25



The PEC25 converts RS-232 and RS-485. This unit is dedicated for communication with PER610, PETxxx, PEDxxx, PEFxxx and PEA208.

- 1x RS-232
- 2x RS-485 serial channels
- Baud rate 19 200 bits/s
- Power supply 7.5 - 24 VDC
- Plastic DIN rail compatible enclosure
- Dimensions 36 x 90 x 58 mm
- Weight 0.1 kg

Product code CS0163

## PEF150



The PEF150 is interface for fluorescent lamp dimming ballasts with DALI protocol.

- 4x Potential free contact input
- 4x Test button on front panel
- 1x DALI up to 64 dimming ballasts, control up to 15 independent groups
- LED indicators for power supply, serial channel activity and status of two groups
- Serial communication RS-485
- Version 110 or 230 VAC
- Plastic DIN rail compatible enclosure
- Dimensions 71 x 90 x 58 mm, weight 0.3 kg

Product codes

- CS0249-1 (version 110 V)
- CS0249-2 (version 230 V)

## PEF200



The PEF 200 is a two-channel interface for fluorescent lamp dimming ballasts with DSI.

- 4x Potential free contact input
- 4x Test button on front panel
- 2x DSI ports, each up to 50 electronic ballasts
- LED indicators for power supply, serial channel activity and status of outputs
- Serial communication RS-485
- Version 110 or 230 VAC
- Plastic DIN rail compatible enclosure
- Dimensions 71 x 90 x 58 mm, weight 0.3 kg

Product codes

- CS0166-1 (version 110 V)
- CS0166-2 (version 230 V)

## PEA208



PEA208 is a two-channel analog output 0 - 10 V interface. Build-in relays enable cut of power for analog controlled fluorescent ballasts.

- 4x Potential free contact input
- 4x Test button on front panel
- 2x Analog output 0 - 10 V
- 2x Relay 230 V, max. 8 A
- LED indicators for power supply, serial channel activity and status of outputs
- Serial communication RS-485
- Plastic DIN rail compatible enclosure
- Dimensions 71 x 90 x 58 mm, weight 0.3 kg

Product codes

- CS0225-1 (version 110 V)
- CS0225-2 (version 230 V)

## POWER SWITCHING UNITS

### relayCUE-8



Eight-channel relay switching unit for loads up to 10 A per channel. The unit can be controlled by serial channel RS-485 and by potential free contact inputs.

- 8x Digital contact closure input
- 4x Potential free relay C-NO, 230 V / 10 A
- 4x Potential free relay NC-C-NO, 230 V / 10 A
- 8x Test button for power relay control
- LED indicators for power supply, serial channel activity and status of all relays
- Serial communication RS-485
- Plastic DIN rail compatible enclosure
- Dimensions 158 x 90 x 58 mm, weight 0.5 kg

#### Product codes

- CS0335-1 (version 110 V)
- CS0335-2 (version 230 V)

### powerAUX



The powerAUX is an eight-channel relay switching unit, 16 A per relay. It may be connected to the controller's digital or relay outputs. The front panel includes LED indicators for power supply and relay status.

- 8x Potential free contact input
- 4x Potential free relay C-NO, 230 V / 16 A
- 4x Potential free relay NC-C-NO, 230 V / 16 A
- Power supply 230 VAC
- Plastic DIN rail compatible enclosure
- Dimensions 158 x 90 x 58 mm
- Weight 0.5 kg

Product code CS0016

### PER610



The PER610 is a six-channel relay switching unit for loads up to 10 A per channel. The unit can be controlled by serial channel and by potential free contact inputs.

- 6x Potential free contact input
- 6x Potential free relay NC-C-NO, 230 V / 10 A
- 6x Test button for power relay control
- LED indicators for power supply, serial channel activity and status of all relays
- Serial communication RS-485
- Plastic DIN rail compatible enclosure
- Dimensions 106 x 90 x 58 mm, weight 0.5 kg

#### Product codes

- CS0167-1 (version 110 V)
- CS0167-2 (version 230 V)

### PES03



The PES 03 is a three-channel suppressor unit for switching channels. The enclosure allows simple installation on a DIN rail.

- Maximum voltage 275 VAC
- Max. load current 10 Amps
- Plastic DIN rail compatible enclosure
- Dimensions 36 x 90 x 58 mm
- Weight 0.1 kg

Product code CS0168

## DIMMERS

### PED108



The PED108 is a one-channel dimmer for resistive and inductive loads up to 8 A.

- 2x Potential free contact input
- 2x Test button on front panel
- 1x Regulated output, max. load 8 A
- Resistive and inductive load type
- Over-current protection fuse
- Front panel indicators
- Serial communication RS-485
- Plastic DIN rail compatible enclosure
- Dimensions 106 x 90 x 58 mm, weight 0.8 kg

#### Product codes

- CS0164-1 (version 110 V)
- CS0164-2 (version 230 V)

### PED202



The PED202 is a two-channel dimmer for resistive and inductive loads up to 2.7 A per channel, max. 4 A total.

- 4x Potential free contact input
- 4x Test button on front panel
- 2x Regulated output
- Max. load 2.7 A per channel, 4 A total
- Resistive and inductive load type
- Over-current protection fuse
- Front panel indicators
- Serial communication RS-485
- Plastic DIN rail compatible enclosure
- Dimensions 106 x 90 x 58 mm, weight 0.5 kg

#### Product codes

- CS0165-1 (version 110 V)
- CS0165-2 (version 230 V)

### PET102



The PET102 is a one-channel dimmer for resistive and capacitive loads up to 2 A suitable for dimming of electronic transformers.

- 2x Potential free contact input
- 2x Test button on front panel
- 1x Regulated output, max. load 2 A
- Resistive and capacitive load type
- Electronic over-current protection
- Front panel indicators
- Serial communication RS-485
- Plastic DIN rail compatible enclosure
- Dimensions 53 x 90 x 58 mm, weight 0.5 kg

#### Product codes

- CS0244-1 (version 110 V)
- CS0244-2 (version 230 V)

### PET105



The PET105 is a one-channel dimmer for resistive and capacitive loads up to 5 A suitable for dimming of electronic transformers.

- 2x Potential free contact input
- 2x Test button on front panel
- 1x Regulated output, max. load 5 A
- Resistive and capacitive load type
- Electronic over-current protection
- Front panel indicators
- Serial communication RS-485
- Plastic DIN rail compatible enclosure
- Dimensions 53 x 90 x 58 mm, weight 0.5 kg

#### Product codes

- CS0245-1 (version 110 V)
- CS0245-2 (version 230 V)

## POWER SUPPLIES

### CUEadapter-12J30



- AC/DC switching mode power supply
- Input voltage 100 to 240 VAC
- Output DC voltage 12 VDC / 30 W
- Dimensions 87 x 48 mm x 32 mm
- Weight 0.2 kg

#### Product codes

- CS0332-001 (European version)
- CS0332-002 (UK version)
- CS0332-003 (US version)

### CUEadapter /65W



- AC/DC switching mode power supply
- Input voltage 100 to 240 VAC
- Output DC voltage 24 VDC / 65 W
- Dimensions 114 x 54 x 34 mm
- Weight 0.3 kg

#### Product codes

- CS0293-001 (European version)
- CS0293-002 (UK version)
- CS0293-003 (US version)

### CUEadapter-24DIN30



- AC/DC switching mode power supply
- Input voltage 85 to 264 VAC
- Output DC voltage 24 VDC / 30 W
- Short circuit and overload protection
- High efficiency up to 83%
- Plastic DIN rail compatible enclosure
- Dimensions 78 x 93 x 56 mm
- Weight 0.3 kg

Product code CS0367

### CUEadapter-24DIN60



- AC/DC switching mode power supply
- Input voltage 88 to 264 VAC
- Output DC voltage 24 VDC / 60 W
- Short circuit and overload protection
- High efficiency up to 84%
- Plastic DIN rail compatible enclosure
- Dimensions 78 x 93 x 56 mm
- Weight 0.3 kg

Product code CS0368

# ETHERNET & PoE

## PoE Adapter



- PoE injector IEEE 802.3af compliant
- Input Voltage 100 to 240 VAC
- Output DC voltage 48 V
- Total output power 15.4 W
- Safety approvals cUL/UL, TUV, CE, CCC
- Plastic enclosure
- Dimensions 140 x 65 x 36 mm
- Weight 0.2 kg

Product code CS0327

## PoE+ Adapter



- PoE injector IEEE 802.3at compliant
- Input Voltage 100 to 240 VAC
- Output DC voltage 56 V
- Total output power 33.6 W
- Safety approvals cUL/UL, CE
- Plastic enclosure
- Dimensions 140 x 65 x 36 mm
- Weight 0.2 kg

Product code CS0410

## Wi-Fi Access Point



- Hi-Power Wireless-b/g/n AP Router
- LAN ports: 1x WAN, 4x LAN
- Up to 2000 mW (33 dBm) Output Power
- Adjustable Output Power
- Detachable dipole antenna with R-SMA connector
- AP, Router, Client, Bridge, Repeater Multi-mode
- Multiple SSID and Bandwidth Control
- 1 x USB 2.0 Port for FTP File Sharing
- Anonymous and Account FTP Server
- Security: 64/128-bit WEP, WPA with PSK / AES support, WPA2 support
- Power supply 12 VDC
- Plastic enclosure
- Dimensions 155 x 30 x 150 mm, weight 0.3 kg

Product code CS0277

## Ethernet Switch SX-1162



- Unmanaged Ethernet switch
- 5x UTP ports 10BaseT/100BaseTX
- IEEE 802.3 compliant
- Auto-MDIX
- Power supply 24 VDC
- Plastic DIN rail compatible enclosure
- Dimensions 36 x 90 x 60 mm
- Weight 0.1 kg

Product code CS0366

## PoE Ethernet Switch



- 8-port PoE Ethernet switch 802.3af compliant
- Input voltage 100 to 240 VAC, external adapter
- Max. 15.4 W PoE on all ports simultaneously
- Web User Interface
- Secure remote management
- Fully rack-mountable
- Dimensions 279 x 45 x 170 mm
- Weight 1.2 kg

Product code CS0328

# *cue*

PRODUCT OVERVIEW

